

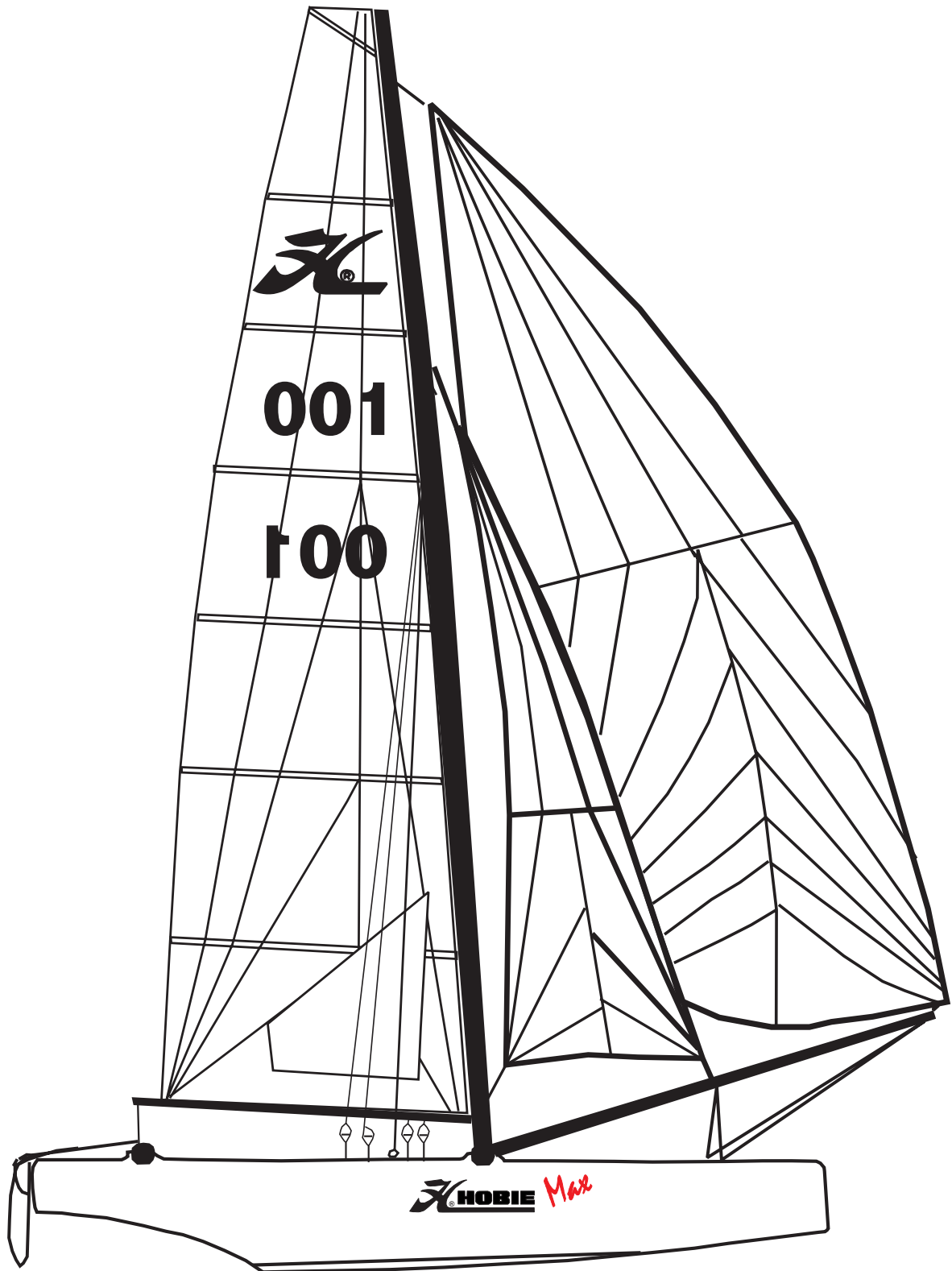


16

Eclaté des pièces détachées

Illustrated Part Guide - Explosionszeichnung

## HOBIE MAX CLUB



16256050 : Coque gauche  
Left hull  
Rumpf links

16256060 : Coque droite  
Right hull  
Rumpf rechts

## Hobie Max Club Coque/Hull/Rumpf

16290070 : Capot avant  
Front deck  
Decke vorne

16290075 : Capot milieu  
Middle deck  
Decke mittel

16280320 : Sac accastillage/Rig bag/Takelagesack  
16270425 : Sac cordages/Rope bag/Leinesack  
16260520 : Jeu de câbles/Cable set/Käbelsatz

1 - 99061405 : cadene fil en U d 8.35  
Bow plate  
Hahnepot-Platte

2 - 21056028 : Vis cadène hauban  
Anchor pin shroud  
Schraube für Püttingeisen

3 - 18056033 : Trappe de visite 127 mm  
Inspection port  
Luckendeckel

4 - 99500440 : Taquet rotation  
Camcleat Rotation  
Klemme

5 - 99056047 : Fémelot  
Lower pintle  
Ruderbeschlag unter

6 - 16552190 : Goupille avec câble et vis  
Retaining clip w/ wire and bolt  
Sicherungsclip mit Kabel und Schraube

7 - 99220041 : Joint de vidange  
PKG 10  
Drain gasket  
Dichtung Ablassschraube

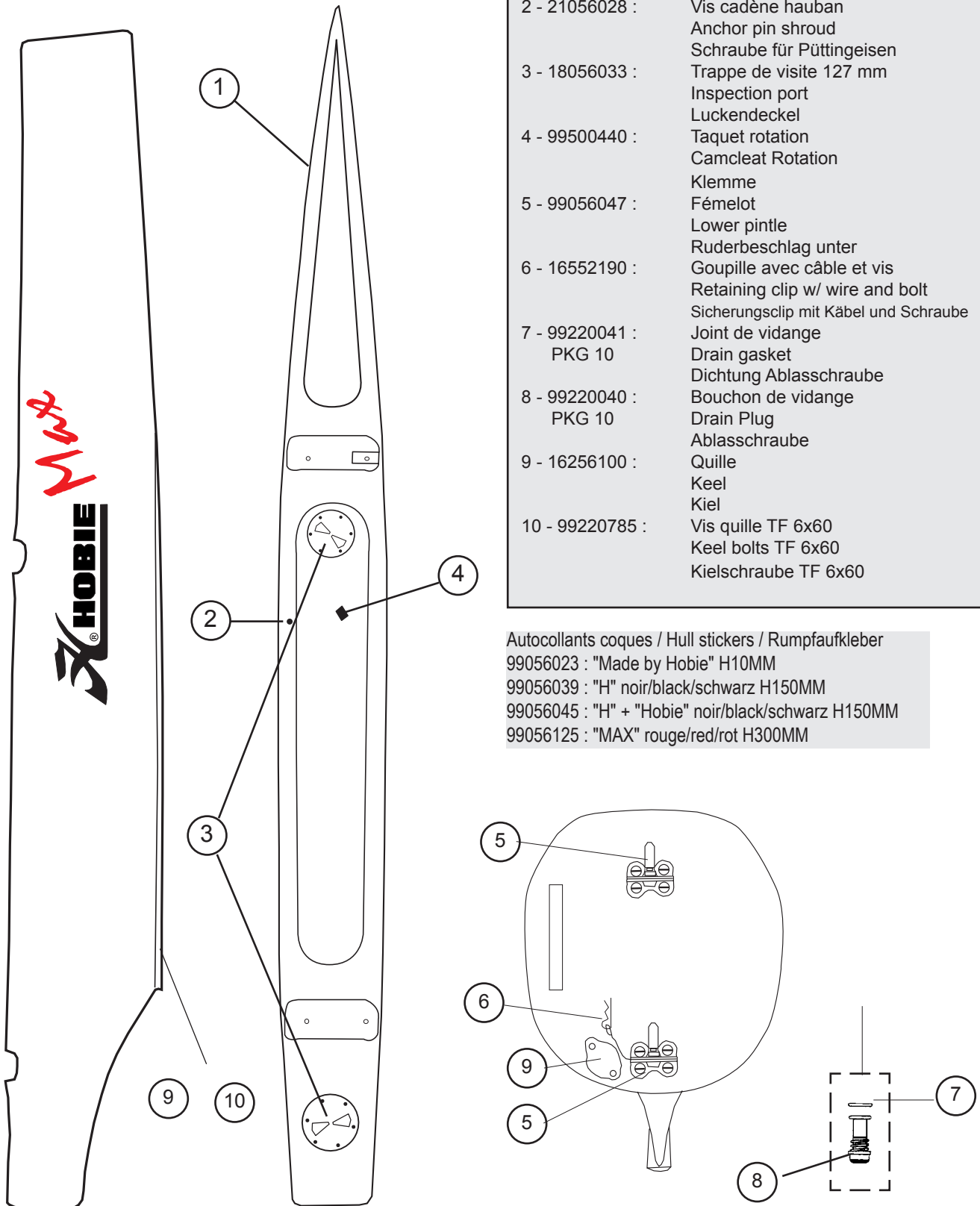
8 - 99220040 : Bouchon de vidange  
PKG 10  
Drain Plug  
Ablassschraube

9 - 16256100 : Quille  
Keel  
Kiel

10 - 99220785 : Vis quille TF 6x60  
Keel bolts TF 6x60  
Kielschraube TF 6x60

### Autocollants coques / Hull stickers / Rumpfaufkleber

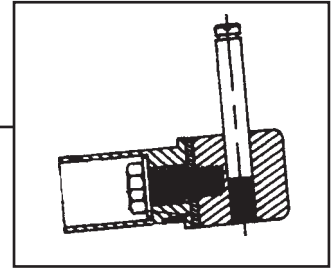
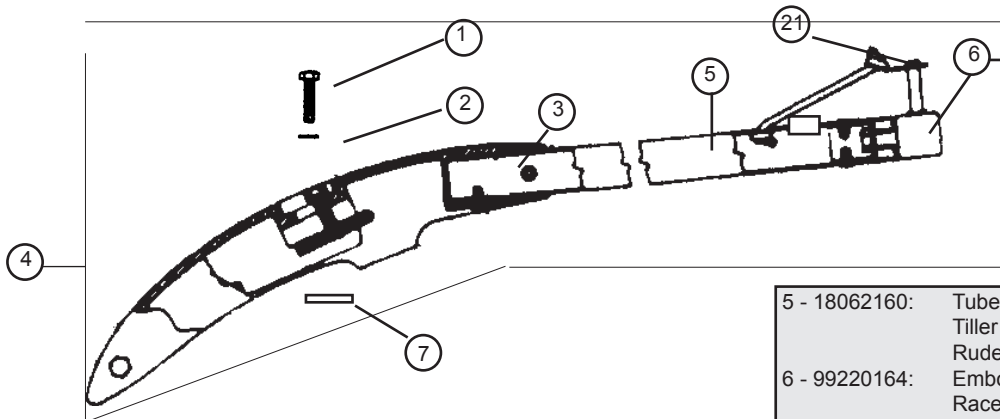
99056023 : "Made by Hobie" H10MM  
99056039 : "H" noir/black/schwarz H150MM  
99056045 : "H" + "Hobie" noir/black/schwarz H150MM  
99056125 : "MAX" rouge/red/rot H300MM



Gouvernail droit complet/Rudder assy right complet  
Ruderanlage komplett rechts : 16262160

Gouvernail gauche complet/Rudder assy complete  
Left Ruderanlage komplett links : 16262165

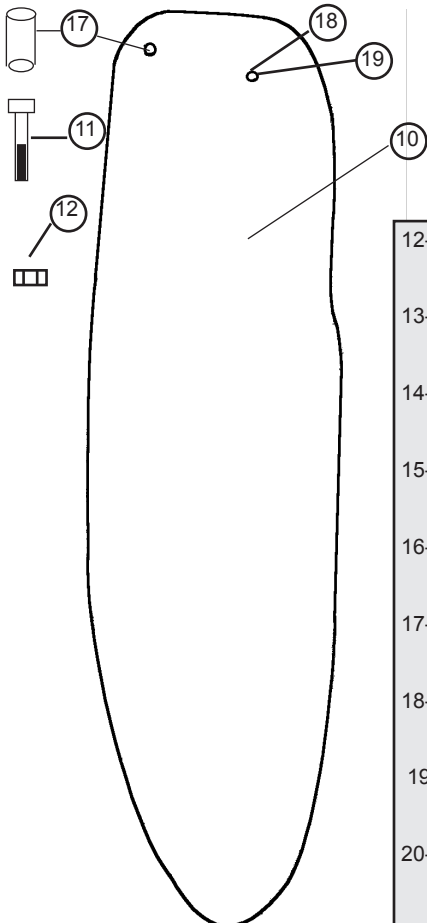
## Hobie Max Club Safran/Rudder/Ruderblatt



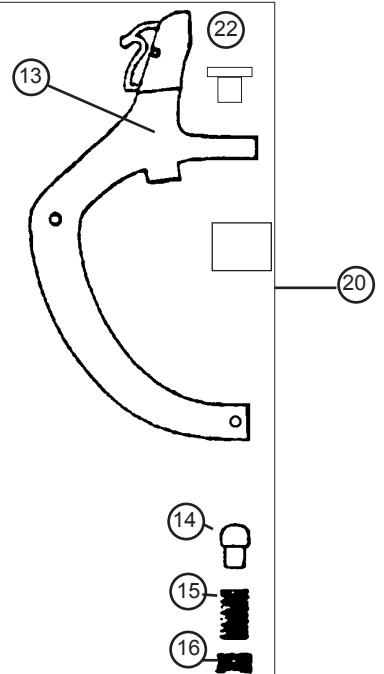
- |                |                           |
|----------------|---------------------------|
| 1 - 99221123:  | Vis TH 8x30 casting       |
| PKG 10         | Cast.bolt                 |
|                | Schraube Gußt.            |
| 2 - 99061110:  | Rondelle plate 08         |
| PKG 10         | Washer                    |
|                | Unterlegscheibe           |
| 3 - 17000010:  | Casting supérieur gouv.   |
|                | Upper rudder casting      |
|                | Oberes Rudergehäuse       |
| 4 - 16262155 : | Bras gouv.droit complet   |
|                | Tiller arm right complete |
|                | Ruderarm rechts komplett  |
| 16262152:      | Bras gouv.gauche complet  |
|                | Tiller arm left complete  |
|                | Ruderarm links komplett   |

- |               |                                |
|---------------|--------------------------------|
| 5 - 18062160: | Tube de gouvernail             |
|               | Tiller tube                    |
|               | Ruderrohr                      |
| 6 - 99220164: | Embout gouvernail Race fixe    |
|               | Race tiller end cap            |
|               | Ruderarmendstück Race          |
| 7 - 14061122: | Platine dural                  |
|               | Cam stop plate                 |
|               | Platine f. oberes Rudergehäuse |
| 8 - 14061180: | Came safran                    |
| PKG 10        | Plastic cam                    |
|               | Rudernock                      |
| 9 - 16041755: | Goupille élastique             |
| PKG 10        | Maststep pin                   |
|               | Sprengbolzen                   |
| 10- 99502150: | Lame safran White Knight       |
|               | Ruder blade White Knight       |
|               | Ruderblatt White Knight        |
| 11- 99220003: | Vis safran 8x60                |
| PKG 10        | Rudder bolt                    |
|               | Schraube Ruderblatt            |

Hobie Max : Eclaté de pièces détachées / Illustrated part guide/Explosionszeichnung (2008)



- |                |                               |
|----------------|-------------------------------|
| 12- 99220012:  | Ecrou Nylstop                 |
| PKG 10         | Nylstop nut                   |
|                | Selbstsichernde Mutter        |
| 13- 18000100:  | Casting inf. gouv nu          |
|                | Lower rudder casting bare     |
|                | Unteres Rudergehäuse roh      |
| 14- 14061105:  | Pene safran                   |
| PKG 10         | Plunger                       |
|                | Gegenstück Rudernock          |
| 15- 99220004:  | Ressort inox                  |
| PKG 10         | Spring                        |
|                | Feder                         |
| 16- 99220006 : | Vis safran delrin             |
| PKG 10         | Screw delrin rudder           |
|                | Schraube delrin Ruder         |
| 17- 99502130:  | Insert lame safran 10x8x24    |
|                | Sheave pin rudder blade       |
|                | Bolzen Ruderblatt             |
| 18- 99502160:  | Insert lame safran 10x8x22    |
|                | Rudder blade bushing          |
|                | Ruderblatt-Buchse             |
| 19 - 99220150: | Vis TH 8x55                   |
| PKG 10         | Screw                         |
|                | Schraube                      |
| 20- 17062680 : | Casting inférieur monté       |
|                | Lower rudder cast.assembled   |
|                | Unteres Rudergehäuse montiert |



- |                 |                      |
|-----------------|----------------------|
| 21- 99220161 :  | Clip rapide          |
| PKG 10          | Retainer clip        |
|                 | Sicherungsclip       |
| 22 - 99220113 : | Entretoise plastique |
| PKG 10          | Plastic bushing      |
|                 | Nylon Buchse         |

# Hobie Max Club

## Etai & drisse de foc/Forestay and jib halyard Vorstag und Fockfall

99500477 : Kit enrouleur de foc (8) + émerillon (2)  
 Jib furler (8) + swivel (2)  
 Fockwickler (8) + wirbel (2)

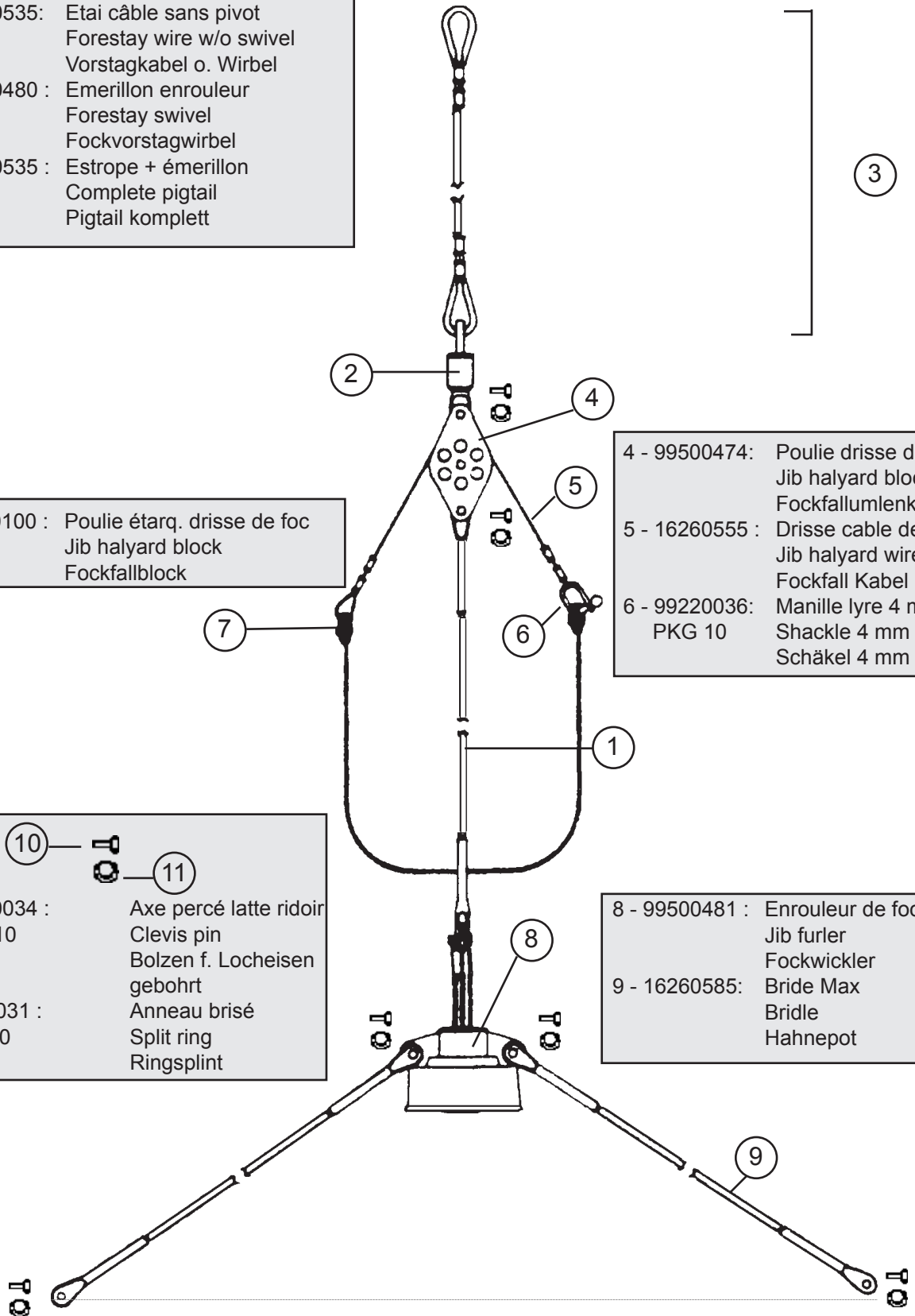
- 1 - 16260535: Etai câble sans pivot  
 Forestay wire w/o swivel  
 Vorstagkabel o. Wirbel
- 2 - 99500480 : Emerillon enrouleur  
 Forestay swivel  
 Fockvorstagwirbel
- 3 - 18560535 : Estrope + émerillon  
 Complete pigtail  
 Pigtail komplett

- 7 - 18080100 : Poulie étarq. drisse de foc  
 Jib halyard block  
 Fockfallblock

- 4 - 99500474: Poulie drisse de foc  
 Jib halyard block ass  
 Fockfallumlenk-Block
- 5 - 16260555 : Drisse cable de foc  
 Jib halyard wire  
 Fockfall Kabel
- 6 - 99220036: Manille lyre 4 mm  
 PKG 10  
 Shackle 4 mm  
 Schäkel 4 mm

- 10 - 99220034 : Axe percé latte ridoir  
 PKG 10  
 Clevis pin  
 Bolzen f. Locheisen  
 gebohrt
- 11 - 99220031 : Anneau brisé  
 PKG 10  
 Split ring  
 Ringsplint

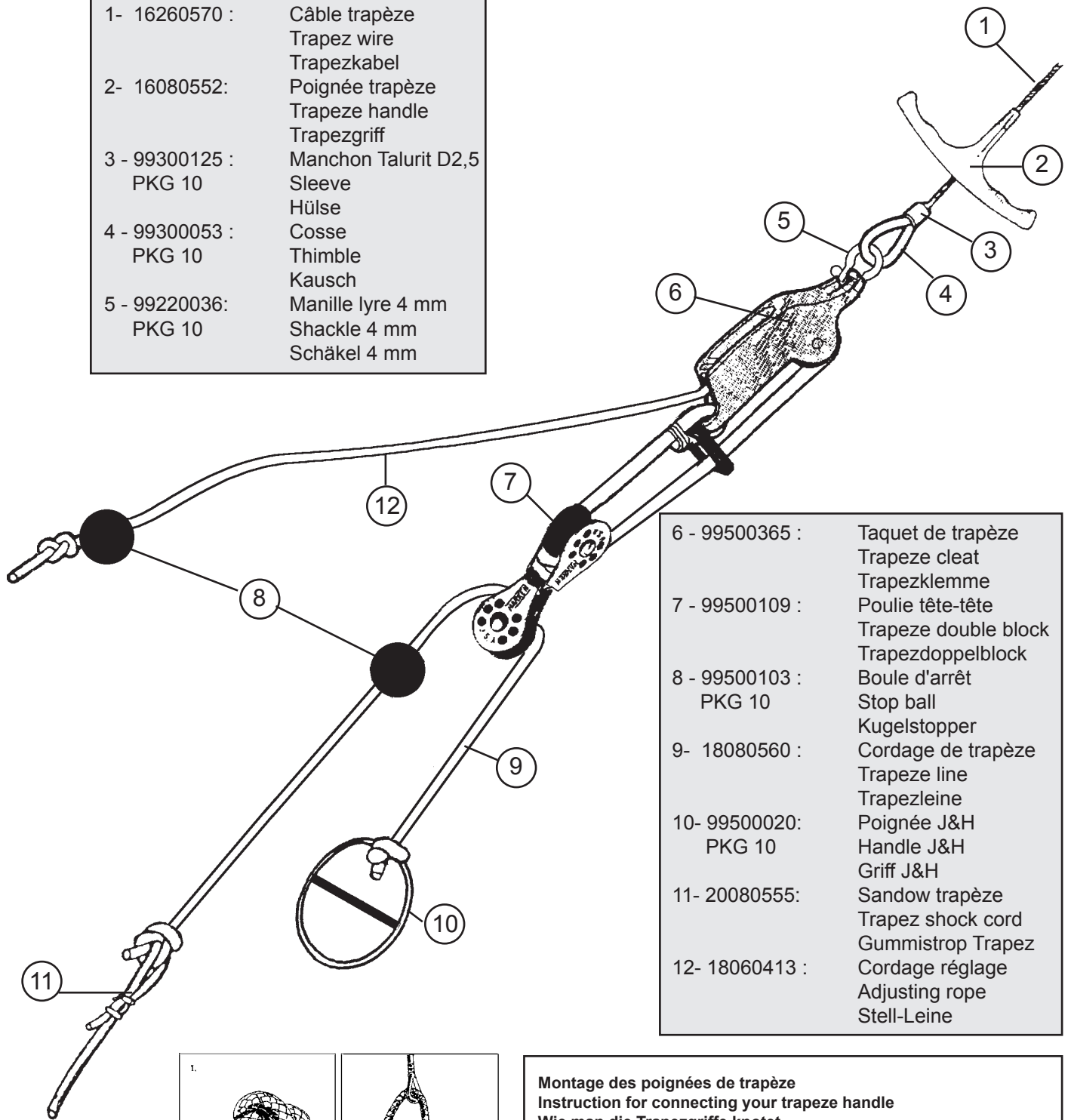
- 8 - 99500481 : Enrouleur de foc  
 Jib furler  
 Fockwickler
- 9 - 16260585: Bride Max  
 Bridle  
 Hahnepot



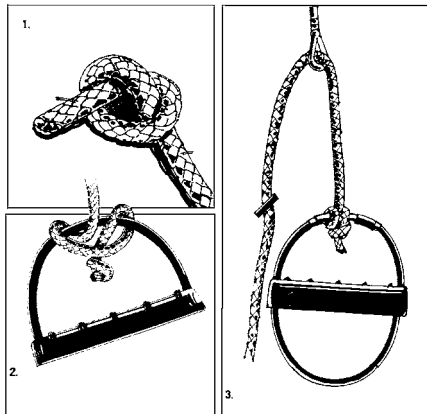
# Hobie Max Club

## Trapèze équipier/Trapeze crew /Trapez Crew

1- 16260570 :	Câble trapèze Trapez wire Trapezkabel
2- 16080552:	Poignée trapèze Trapeze handle Trapezgriff
3 - 99300125 :	Manchon Talurit D2,5 Sleeve Hülse
4 - 99300053 :	Cosse Thimble Kausch
5 - 99220036:	Manille lyre 4 mm Shackle 4 mm Schäkel 4 mm



6 - 99500365 :	Taquet de trapèze Trapeze cleat Trapezklemme
7 - 99500109 :	Poulie tête-tête Trapeze double block Trapezdoppelblock
8 - 99500103 :	Boule d'arrêt PKG 10 Stop ball Kugelstopper
9- 18080560 :	Cordage de trapèze Trapeze line Trapezleine
10- 99500020:	Poignée J&H PKG 10 Handle J&H Griff J&H
11- 20080555:	Sandow trapèze Trapez shock cord Gummistrop Trapez
12- 18060413 :	Cordage réglage Adjusting rope Stell-Leine

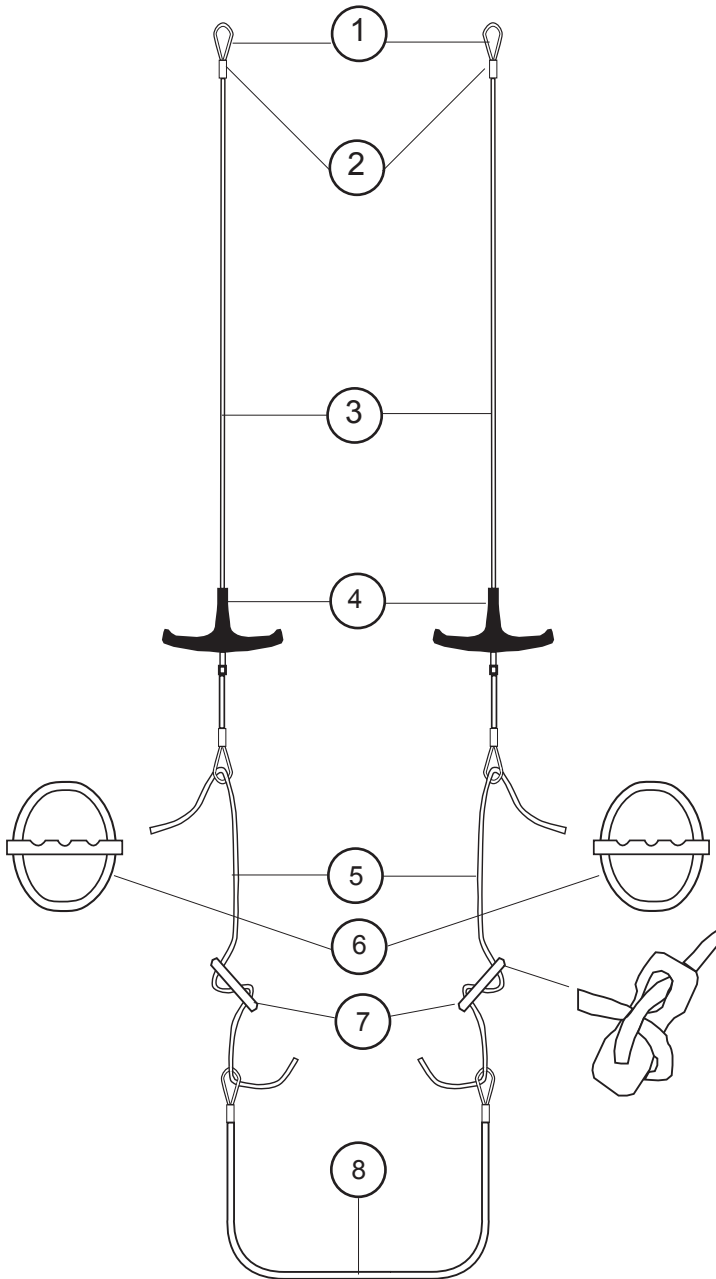


### Montage des poignées de trapèze Instruction for connecting your trapeze handle Wie man die Trapezgriffe knotet

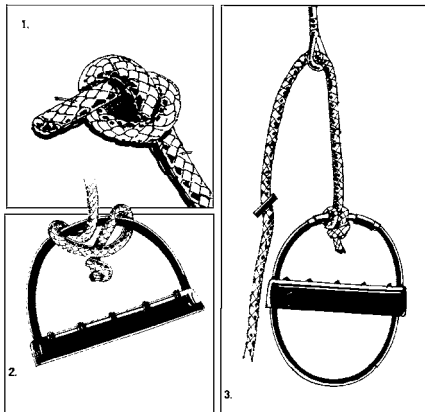
1. Faire un noeud à la fin du cordage 6 mm  
**Tie knot firmly at end of 6 mm**
2. Fixer fermement la corde nouée à la poignée comme indiqué sur le dessin en s'assurant que la corde ne puisse pas glisser du milieu de la poignée.  
**Fix knotted rope firmly to handle as illustrated, ensuring that rope cannot move from top centre of handle.**
3. Attacher normalement la corde au câble de trapèze.  
**Attach rope and handle to trapeze wire as normal.**

# Hobie Max Club

## Trapèze barreur/Trapeze skipper/Trapez skipper



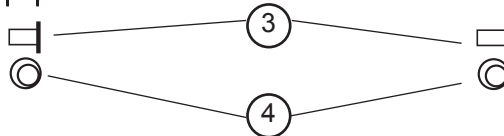
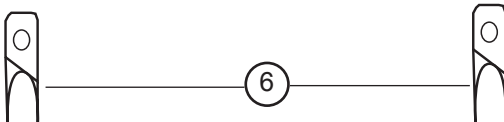
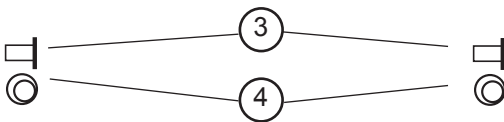
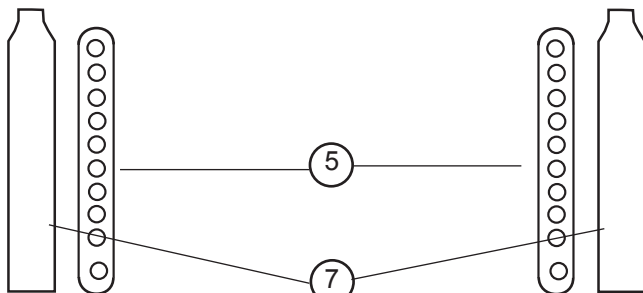
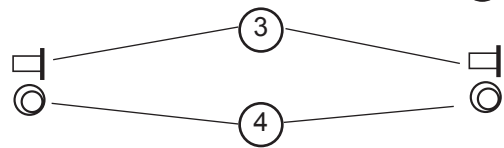
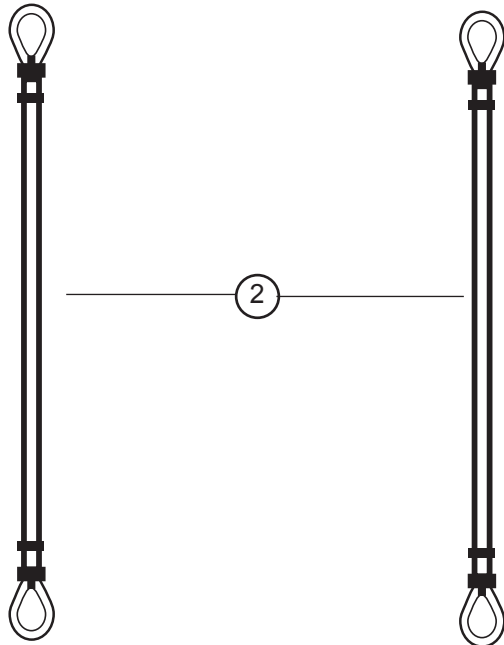
1 - 99300053: PKG 10	Cosse Thimble Kausch
2 - 99300125: PKG 10	Manchon D2,5 Sleeve Hülse
3- 16260560:	Cable trapeze spectra Trapez wire spectra Trapezkabel spectra
4- 16080552:	Poignée Trapèze Trapeze handle Trapezgriff
5- 16080554:	Cordage trapèze Trapeze line Trapezleine
6- 99500020 PKG 10	Poignée J&H Handle J&H Griff J&H
7- 18060301: PKG 10	Double anneau Rope lock Trapezstopper
8 - 16080555: PKG 10	Sandow de trapèze Trapeze shock cord Gummistrop Trapez



### Montage des poignées de trapèze Instruction for connecting your trapeze handle Wie man die Trapezgriffe knotet

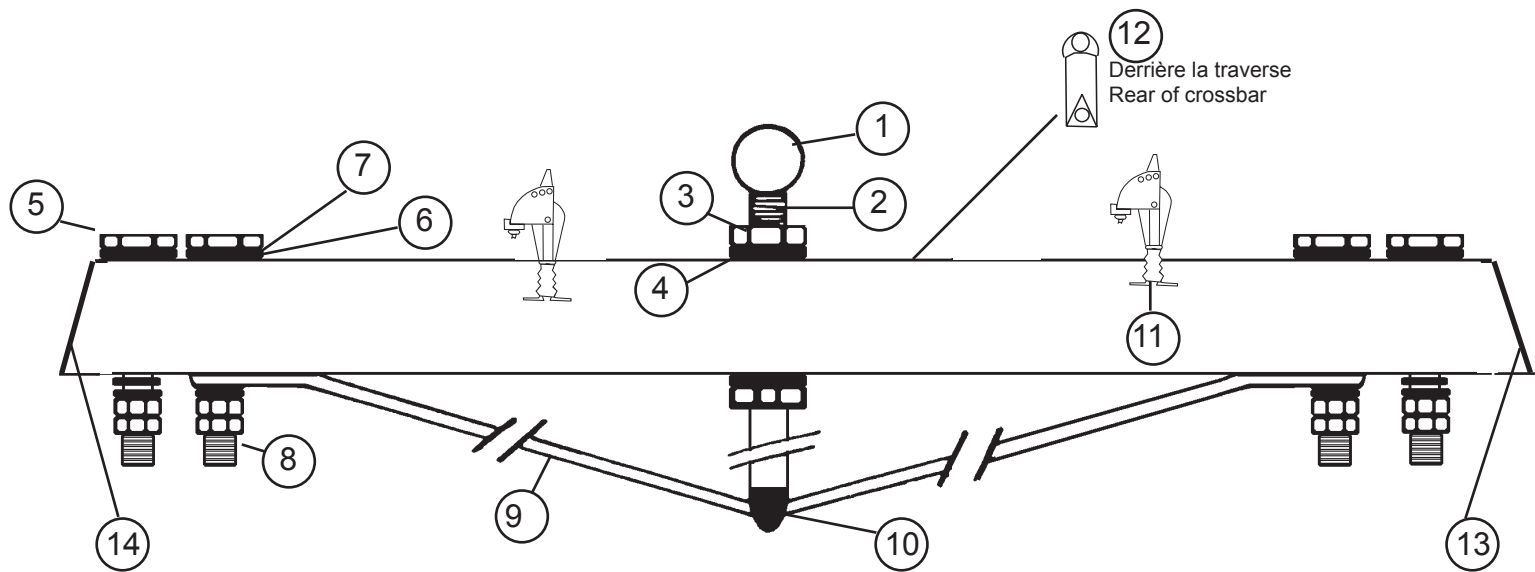
1. Faire un noeud à la fin du cordage 6 mm  
**Tie knot firmly at end of 6 mm**  
*Fester Knoten am Ende der Leine*
2. Fixer fermement la corde nouée à la poignée comme indiqué sur le dessin en s'assurant que la corde ne puisse pas glisser du milieu de la poignée.  
**Fix knotted rope firmly to handle as illustrated, ensuring that rope cannot move from top centre of handle.**  
*Webleinensteck wie gezeigt fest anziehen*
3. Attacher normalement la corde au câble de trapèze.  
**Attach rope and handle to trapeze wire as normal.**  
*Leine durch Trapezkausch und wie üblich befestigen*

## Hobie Max Club Haubans/Shrouds/Wanten



1- 99220058: PKG 10	Manille Lyre 8 mm Bow shackle Mastschäkel
2- 16280560:	Hauban Shroud Want
3- 99220034: PKG 10	Axe percé latte ridoir Clevis pin Bolzen für Wanteisen
4- 99220031: PKG 10	Anneau brisé Split ring Ringsplint
5- 99220033: PKG 10	Latte ridoir universelle Stay adjuster Wantenspanner
6- 16060312: PKG 10	Chape de hauban Toggle Wanten Wirbel
7- 99500360: PKG 10	Protège latte ridoire Shroud adjuster cover Wantenschutz

**Hobie Max Club**  
**Traverse avant/Front crossbar/Vorderholm**  
**16262510**



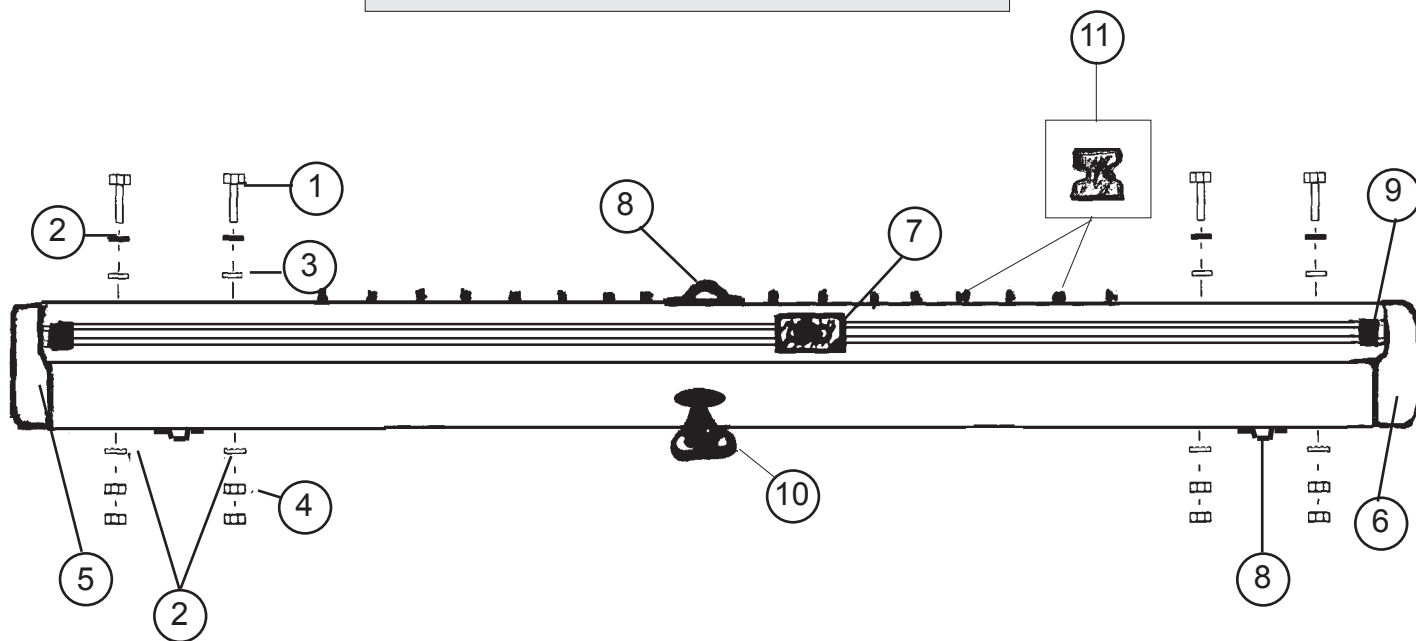
- |                |   |
|----------------|---|
| 1 - 21062673 : | Emplanture de mât<br>Mast stop ball<br>Mastfußkugel                                 |
| 2 - 18062680 : | Etai de martingale<br>Dolphin striker post<br>Unterzug gebohrt                      |
| 3 - 99220104 : | Ecrou HU D16<br>Nut HU D16<br>Mutter HU D16   |
| 4 - 99220100 : | Rondelle D16<br>PKG 10<br>Washer D16<br>Unterlegscheibe D16                         |
| 5 - 99220335 : | Vis TH 10 x 150 x 50<br>Screw TH<br>Schraube TH                                     |
| 6 - 99220059 : | Rondelle D10<br>PKG 10<br>Washer D10<br>Unterlegscheibe D10                         |
| 7 - 99220260 : | Rondelle D10.2 nylon<br>PKG 10<br>Nylon washer D10.2<br>Nylon Unterlegscheibe D10.2 |
| 8 - 99220009 : | Ecrou HU D10<br>PKG 10<br>Nut HU D10<br>Mutter HU D10                               |

- |                |   |
|----------------|---|
| 9 -18062700 :  | Martingale<br>Dolphinstriker<br>Unterzug  |
| 10- 21000010 : | Support étau de martingale<br>Striker bar fastening<br>Unterzug Fuß                                 |
| 11- 99500800 : | Poulie de foc + ressort<br>Jib sheet block +spring<br>Fockblock + splint                            |
| 99220057 :     | Pontet forgé<br>Pad-eye<br>Bügel  |
| 12- 99500415 : | Taquet enrouleur (derrière la traverse)<br>Furler cleat (on rear of beam)<br>Wicklerklemme (hinten) |
| 13- 18062742 : | Bouchon traverse AV droit<br>Beam cap front right<br>Vorderholmendstück vorne rechts                |
| 14- 18062741 : | Bouchon traverse AV gauche<br>Beam cap front left<br>Vorderholmendstück vorne links                 |



**Hobie Max Club**  
**Traverse arrière/Rear crossbar/Achterholm**  
**16262600**

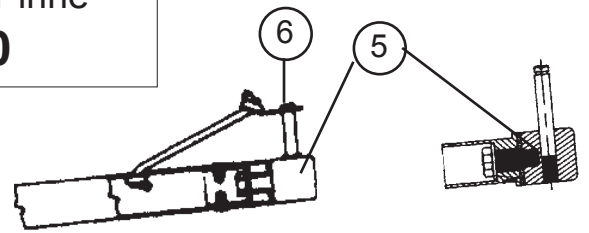
- |                |   |
|----------------|---|
| 1 - 99220335 : | Vis TH 10 x 150 x 50<br>Crossbar bolt<br>Holmbolzen                                     |
| 2 - 99220059 : | Rondelle D10<br>PKG 10<br>Washer D10<br>Unterlegscheibe D10                             |
| 3 - 99220260 : | Rondelle D10.2 nylon<br>PKG 10<br>Nylon washer D10.2<br>Nylon Unterlegscheibe D10.2     |
| 4 - 99220009 : | Ecrou HU D10<br>PKG 10<br>Nut HU D10<br>Mutter HU D10                                   |
| 5 - 18062744 : | Bouchon traverse AR droit<br>Beam end cap rear right<br>Achterholmendstück hint. rechts |
| 6 - 18062743 : | Bouchon traverse AR gauche<br>Beam end cap rear left<br>Achterholmendstück hint. links  |



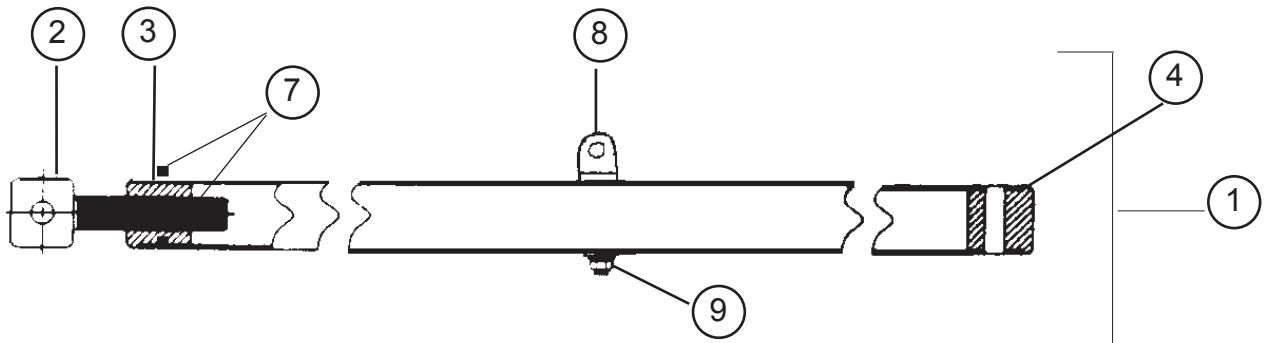
- |                |   |
|----------------|---|
| 7 - 99500255 : | Chariot de grand-voile simple TI<br>Traveller car<br>Großtraveller                        |
| 8 - 99220057 : | Pontet forgé D5<br>Pad-eye<br>Bügel   |
| 9 - 21062521 : | Embout rail d'écoute grand voile<br>Traveller track end stop<br>Travellerschiene Endstück |

- |                |  |
|----------------|--|
| 10- 99500467 : | Tourelle taquet carbo<br>Swivel camcleat<br>Drehklemme   |
| 11- 99500700 : | Boutons de laçage trampoline<br>PKG 16<br>Trampoline lacing post<br>Trampolineleinenumlenkstop |
| 99216040 :     | Rivet pop inox 4x16<br>PKG 10<br>Inox pop rivet 4x16<br>Popniete Inox 4x16                     |

**Hobie Max Club**  
 Barre d'accouplement & stick  
 Tiller crossbar & stick  
 Anlenkstange & Pinne  
**16262250**

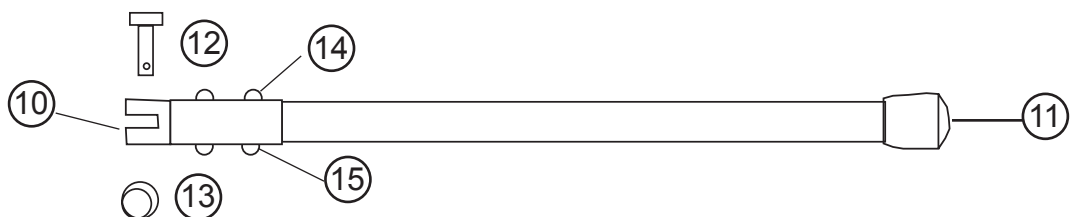


Bras de gouvernail/Rudder arm/Ruderarm



1 - 16262250 :	Barre d'accouplement Max Club Tiller crossbar Max Club Anlenkstange Max Club
2- 99220118: PKG 2	Vis de réglage Adjustment arm Anlenkstange-Einstellschraube
3- 99220119 :	Embout fileté Threaded end cap Enstück mit Gewinde
4- 99220121 :	Embout de barre acc. percé Tiller crossbar drilled end cap Anlenkstange-Endstück gebohrt
5 - 99220164 :	Embout de gouvernail Race Race tiller end cap Ruderarmenstück Race
6 - 99220161 : PKG 2	Clip rapide Retainer clip Sicherungsclip
99220420 : PKG 2	Axe vertical Vertical pin
7 - 99220445 :	Vis M.TCLPZ 4x6 Screw Schraube
8 - 99221301: PKG 4	Vis violon Violon screw Schraube für Pinnengelenk

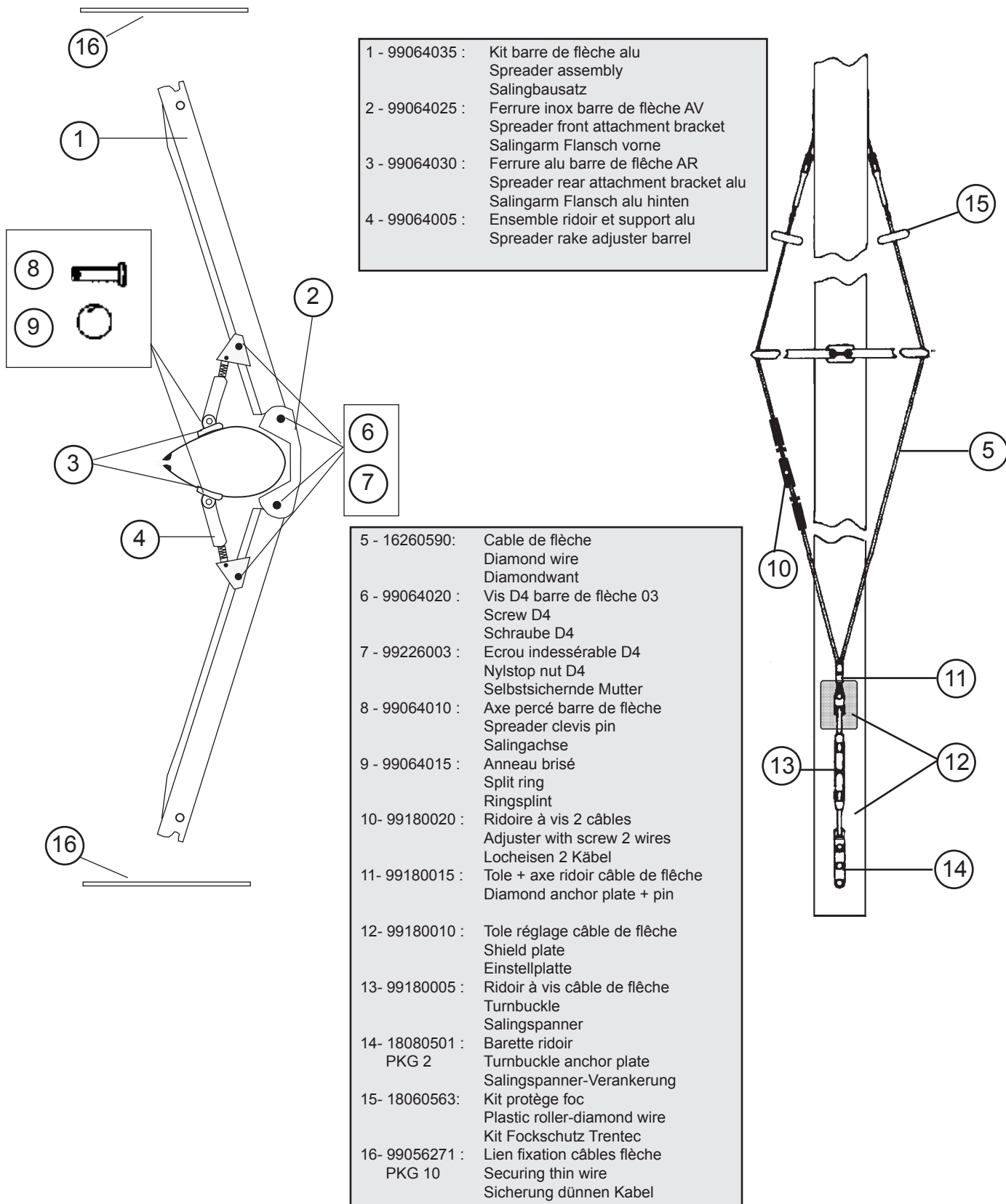
9 - 99220012: PKG 10	Ecrou indessérable D8 Nylstop nut D8 Selbstsichernde Mutter D8
<b>16062305 :</b>	<b>Stick aluminium</b> <b>Aluminium Tiller extension</b> <b>Aluminium Pinne</b>
10 - 14061320: PKG 2	Chape d'articulation stick Hinge
11 - 14061315: PKG 10	Embout stick alu Aluminium extension tip Pinnenendstück Aluminium
12 - 14061240: PKG 10	Axe percé art. stick Clevis pin Bolzen Pinnengelenk
13 - 99220031: PKG 10	Anneau brisé Split ring Ringsplint
14 - 99220014: PKG 10	Vis TH 5 x 25 Screw TH 5 x 25 Schraube TH 5 x 25
15 - 99220015: PKG 10	Ecrou indessérable 5 Nylstop nut 5 Selbstsichernde Mutter 5



## Hobie Max Club

### Barre de flèche et cables Spreaders and diamond wires Saling und Diamondwant

99064050 : KIT BARRE DE FLECHE cpt  
SPREADER ASSEMBLY  
SALING BAUSATZ



- 1 - 99064035 : Kit barre de flèche alu  
Spreader assembly  
Salingbausatz
- 2 - 99064025 : Ferrure inox barre de flèche AV  
Spreader front attachment bracket  
Salingarm Flansch vorne
- 3 - 99064030 : Ferrure alu barre de flèche AR  
Spreader rear attachment bracket alu  
Salingarm Flansch alu hinten
- 4 - 99064005 : Ensemble ridoir et support alu  
Spreader rake adjuster barrel

- 5 - 16260590: Cable de flèche  
Diamond wire  
Diamondwant
- 6 - 99064020 : Vis D4 barre de flèche 03  
Screw D4  
Schraube D4
- 7 - 99226003 : Ecrou indessérable D4  
Nylstop nut D4  
Selbstsichernde Mutter
- 8 - 99064010 : Axe percé barre de flèche  
Spreader clevis pin  
Salingachse
- 9 - 99064015 : Anneau brisé  
Split ring  
Ringsplint
- 10- 99180020 : Ridoire à vis 2 câbles  
Adjuster with screw 2 wires  
Locheisen 2 Kabel
- 11- 99180015 : Toile + axe ridoir câble de flèche  
Diamond anchor plate + pin
- 12- 99180010 : Toile réglage câble de flèche  
Shield plate  
Einstellplatte
- 13- 99180005 : Ridoir à vis câble de flèche  
Turnbuckle  
Salingspanner
- 14- 18080501 : Barette ridoir  
PKG 2  
Turnbuckle anchor plate  
Salingspanner-Verankerung
- 15- 18060563: Kit protège foc  
Plastic roller-diamond wire  
Kit Fockschutz Trentec
- 16- 99056271 : Lien fixation câbles flèche  
PKG 10  
Securing thin wire  
Sicherung dünnen Kabel

16242700 : Mât complet ss tourelle  
Complete mast w/o block  
Mast komplett o. Cunningham

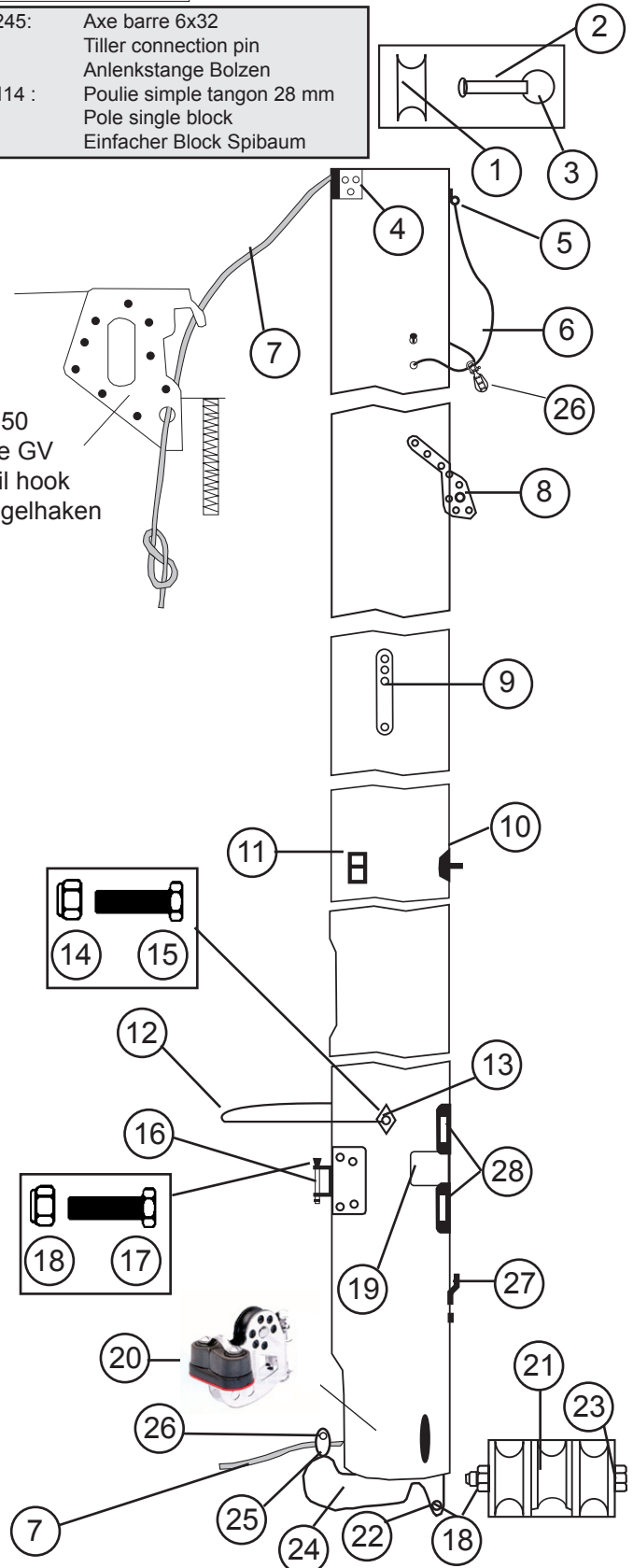
## Hobie Max Club Mât/Mast/Mast

16242750 : Mât 2 pièces  
2-piece mast  
2-teiliger Mast

- 1 - 99041011 : Rea alu D20  
Aluminium sheave D20  
Alu Rolle D20
- 2 - 99220047 : Axe percé vit mulet  
Clevis pin gooseneck  
Bolzen gebohrt f. Lümmelbeschlag  
PKG 5
- 3 - 99220031 : Anneau brisé  
Split ring  
Ringsplint  
PKG 10
- 4 - 20041755 : Fixation du hook  
Hook fastening  
Haken-Befestigung
- 5 - 99220238 : Ferrure fixation Dragoon  
Tang Dragoon  
Beschlag Dragoon
- 6 - 99300565 : Cordage collier de spi D4  
Mast rope spi D4  
Mastleine Spi D4
- 7 - 18060408 : Drisse de grand-voile  
Main halyard rope  
Großfalleine
- 8 - 21041720 : Ferrure de capelage  
Mast tang  
Mastbeschlag
- 9 - 21080511 : Barrette cable de flèche  
Diamond wire holder  
Salingdraht-Mastbeschlag
- 10 - 99064025 : Ferrure inox barre flèche  
Inox spreader anchor plate  
Saling Inox Platte
- 11 - 99064030 : Ferrure alu barre flèche  
Spreader anchor plate alu  
Saling Alu Platte
- 12 - 17060302 : Bras de rotation de mât  
Mast rotator  
Rotationsarm
- 13 - 18062717 : Plaque de compression  
Mast rotator compression plate  
Rotationsarm-Mastplatte
- 14 - 99220012 : Ecrou indessérable D 8  
Nylstop nut  
Selbstsichernde Mutter  
PKG 10
- 15 - 99220307 : Vis TH 8x110  
Screw TH 8x110  
Schraube TH 8x110
- 16 - 18011865 : Embase de vit mulet  
Gooseneck base  
Lümmel-Mastbeschlag
- 17 - 99220311 : Vis TH 6 x 35  
TH Screw  
Schraube TH
- 18 - 99220019 : Ecrou nylstop 6  
Nylstop nut 6  
Selbstsichernde Mutter 6
- 19 - 14041723 : Autocollant de sécurité  
Mast caution label  
Sicherheitsaufkleber
- 20 - 99080540 : Tourelles cunningham  
Dowhaul swivel camcleat  
Drehklemme Vorliekstrecker
- 21 - 17041750 : Réa de vit mulet  
Gooseneck sheave  
Lümmelbeschlag Rolle
- 22 - 99500332 : Vis 6x60  
Screw 6x60  
Schraube 6x60  
PKG 10
- 23 - 99220022 : Vis 6x70  
Screw 6x70  
Schraube 6x70
- 24 - 18000050 : Base de mât  
Mast base  
Mastfußpfanne

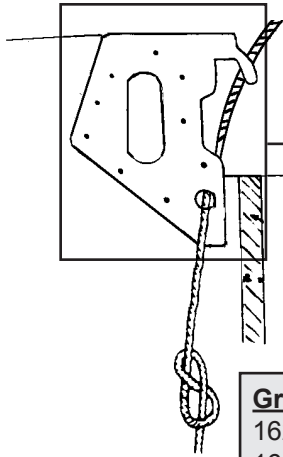
- 25- 14061245: Axe barre 6x32  
Tiller connection pin  
Anlenkstange Bolzen
- 26- 99500114 : Poulie simple tangon 28 mm  
Pole single block  
Einfacher Block Spibaum

20041750  
Hook de GV  
Mainsail hook  
Großsegelhaken



- 27- 18080501 : Barrette ridoire câble de flèche  
Turnbuckle anchor plate  
Salingspanner-Platte  
PKG 2
- 28- 99180010 : Tôle réglable câble de flèche  
Bottlescrew shield plate  
Salingspanner-Schutzplatte

**Hobie Max Club**  
Grand-voile/Main sail/Großsegel



20041750 :  
Hook de grand-voile  
Main hook  
Großhaken

**Grand-voile / Mainsail / Großsegel**

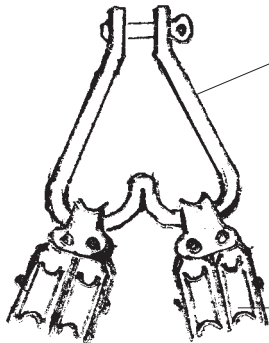
16230050 : Lime  
16230060 : Passion



**Lattes de grand-voile Max Club**  
**Hobie Max Club main battens**  
**Hobie Max Club Großsegel-Latten**

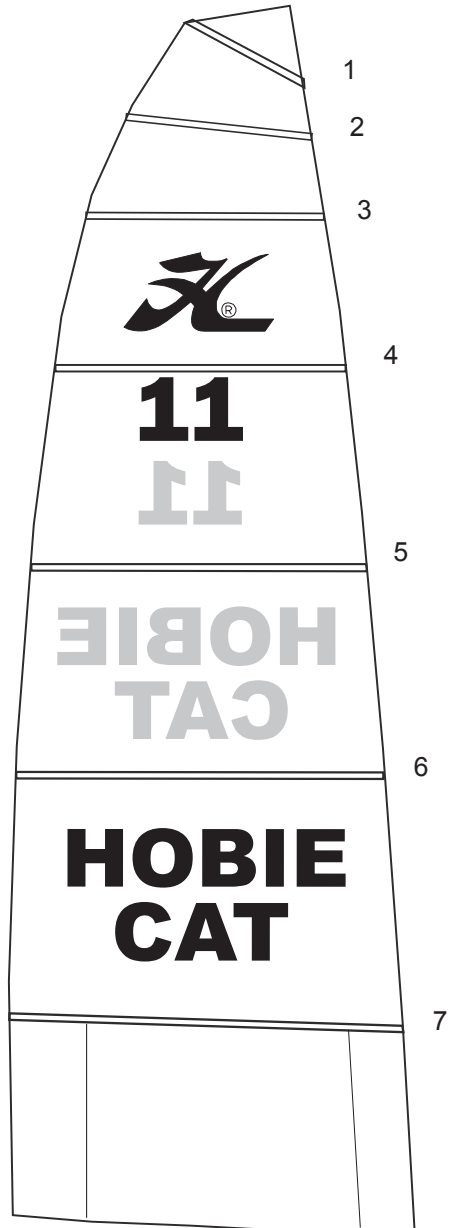
16234050 : Jeu de lattes de grand-voile Sport/Club  
Main foam Batten set complete  
Großsegel-Lattensatz

**CUNNINGHAM SYSTEM/VORLIELSTRECKER**



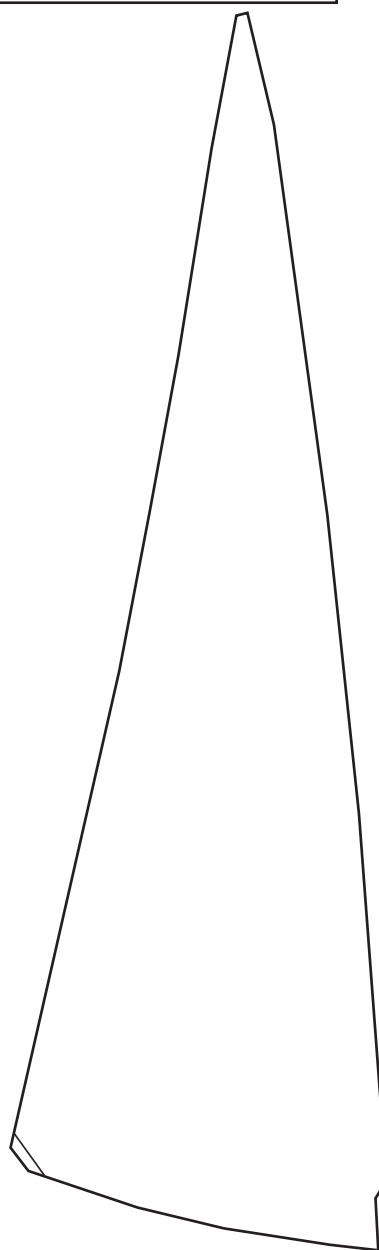
99220132 :  
Manille coeur  
Heart shackle

17070160 :  
Poulie étarquage double  
Double block  
Block zweifach



**Hobie Max Club**  
Foc/Jib/Fock

**16230150 : Vert /Green/Grün**  
**16230155 : Jaune/Yellow/Gelb**  
**16230160 : Orange/Orange**  
**16230169 : Violet/purple**

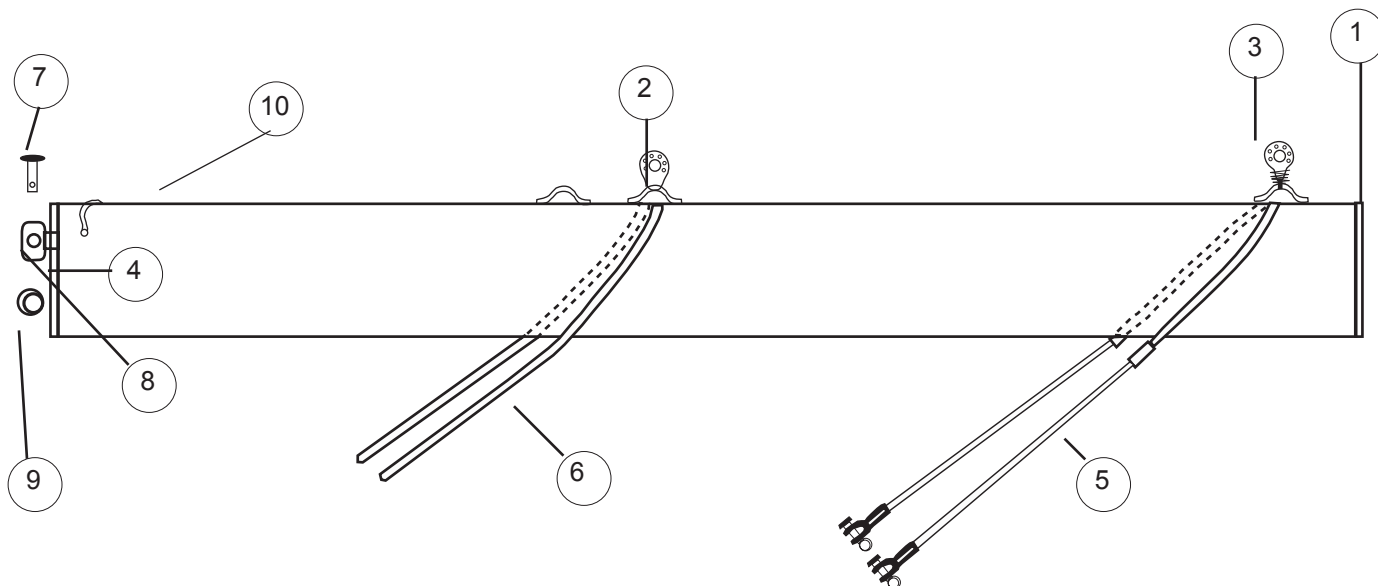


# Hobie Max Club

## Tangon de spi/ Spinnaker pole/Spibaum

### Option

16262640 : Système trompette/Trumpet system



1 - 99220202: PKG 5	Bouchon à ailette End cap Endstück
2 - 99220057 :	Pontet forgé D5 Pad-eye Guseisenbeschlag
3 - 99500735 :	Poulie avec ressort et pontet Block with spring and eye strap Block mit Splint und Guseisenbeschlag
4 - 17569000 :	Embout bôme percé Boom end cap drilled Baumendstück gebohrt
5 - 16280550 :	Bride tangon Bridle classical Spibaum-Hanepot

6 - 99300545 :	Cordage spectra D4 blanc (trompette) Spectra line D4 (trumpet) Spectraleine D4 (Trumpet)
7 - 14061245 :	Axe barre Connection pin Bolzen
8 - 18061320 :	Chape d'articulation tangon Spi pole connection toggle Verbindungswirbel Spibaum
9 - 99220031 : PKG 10	Anneau brisé Split ring Offener Ring
10 - 60010950 :	Pontet kayak Pad-eye kayak Bügel Kayak

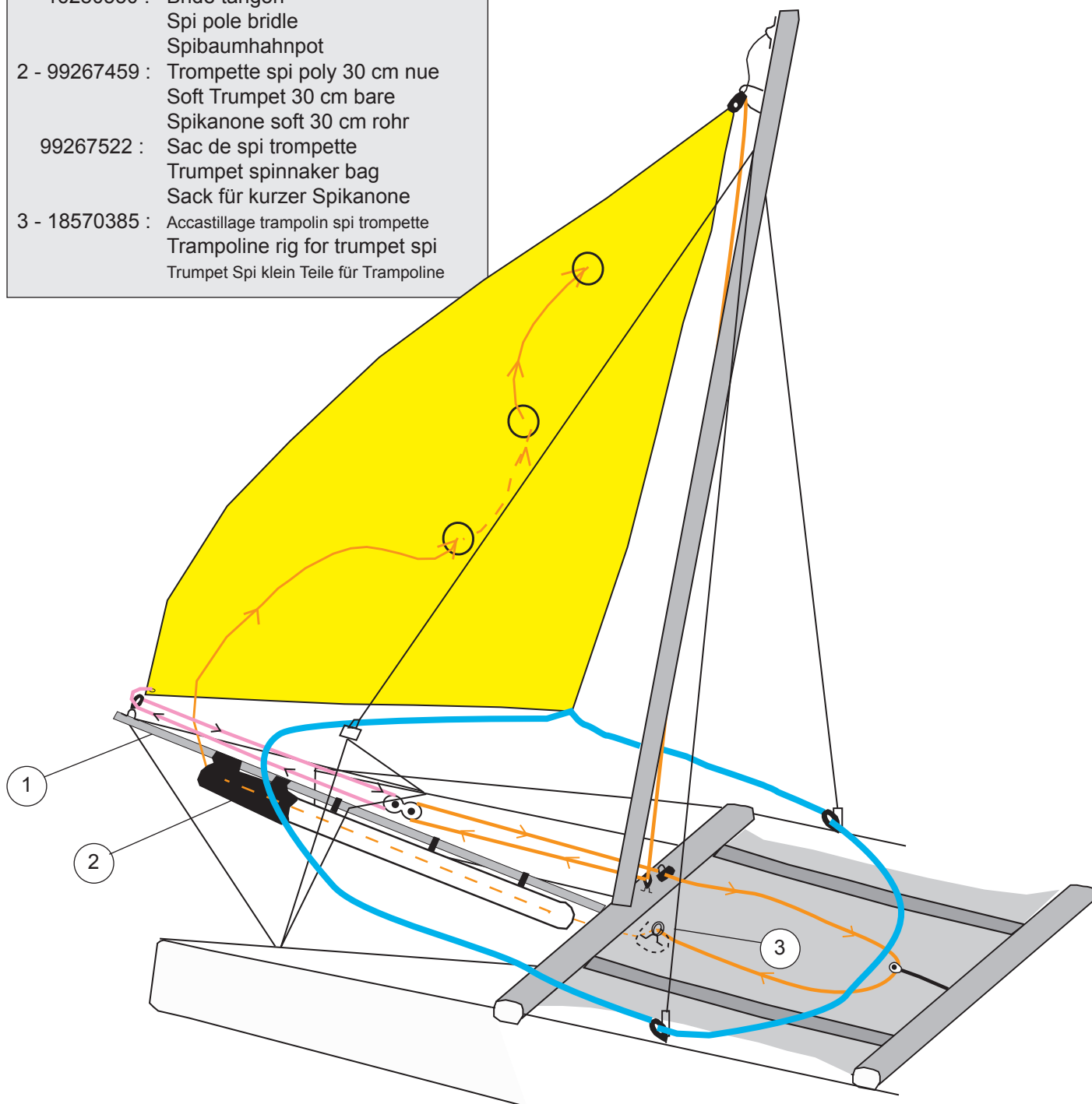
## Hobie Max Club

### Kit de spi trompette/Spi kit trumpet

Option

- 18070330 : Accastillage spi trompette + cordages  
Trumpet spi kit + lines  
Trumpet Spi-Kit + Leine
- 18060414 : Sac cordages spi trompette  
Trumpet line bag  
Spikanoneleinetasche

- 1 - 16262640 : Tangon de spi trompette  
Spi pole trumpet  
Spibaum Trumpet
- 16280550 : Bride tangon  
Spi pole bridle  
Spibaumhahnpot
- 2 - 99267459 : Trompette spi poly 30 cm nue  
Soft Trumpet 30 cm bare  
Spikanone soft 30 cm rohr
- 99267522 : Sac de spi trompette  
Trumpet spinnaker bag  
Sack für kurzer Spikanone
- 3 - 18570385 : Accastillage trampoline spi trompette  
Trampoline rig for trumpet spi  
Trumpet Spi klein Teile für Trampoline

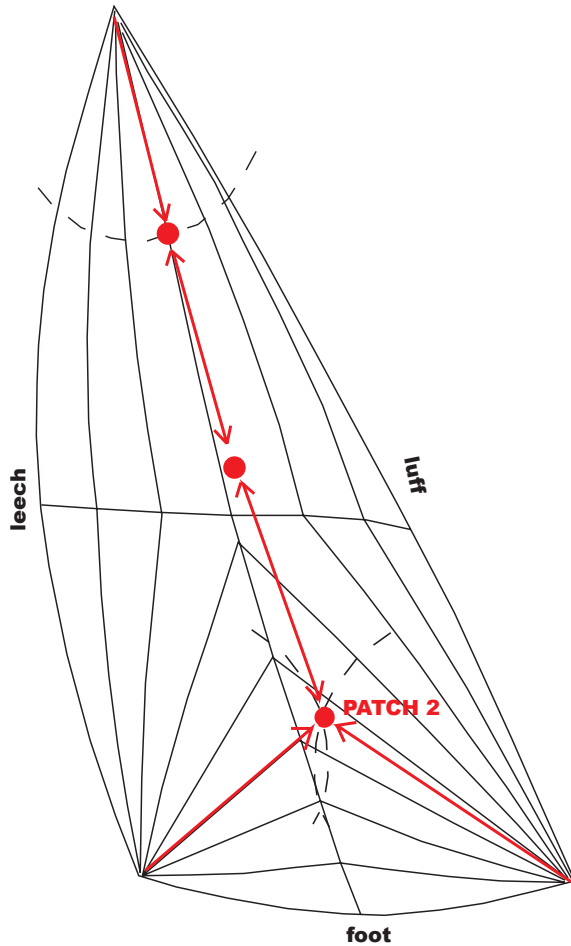




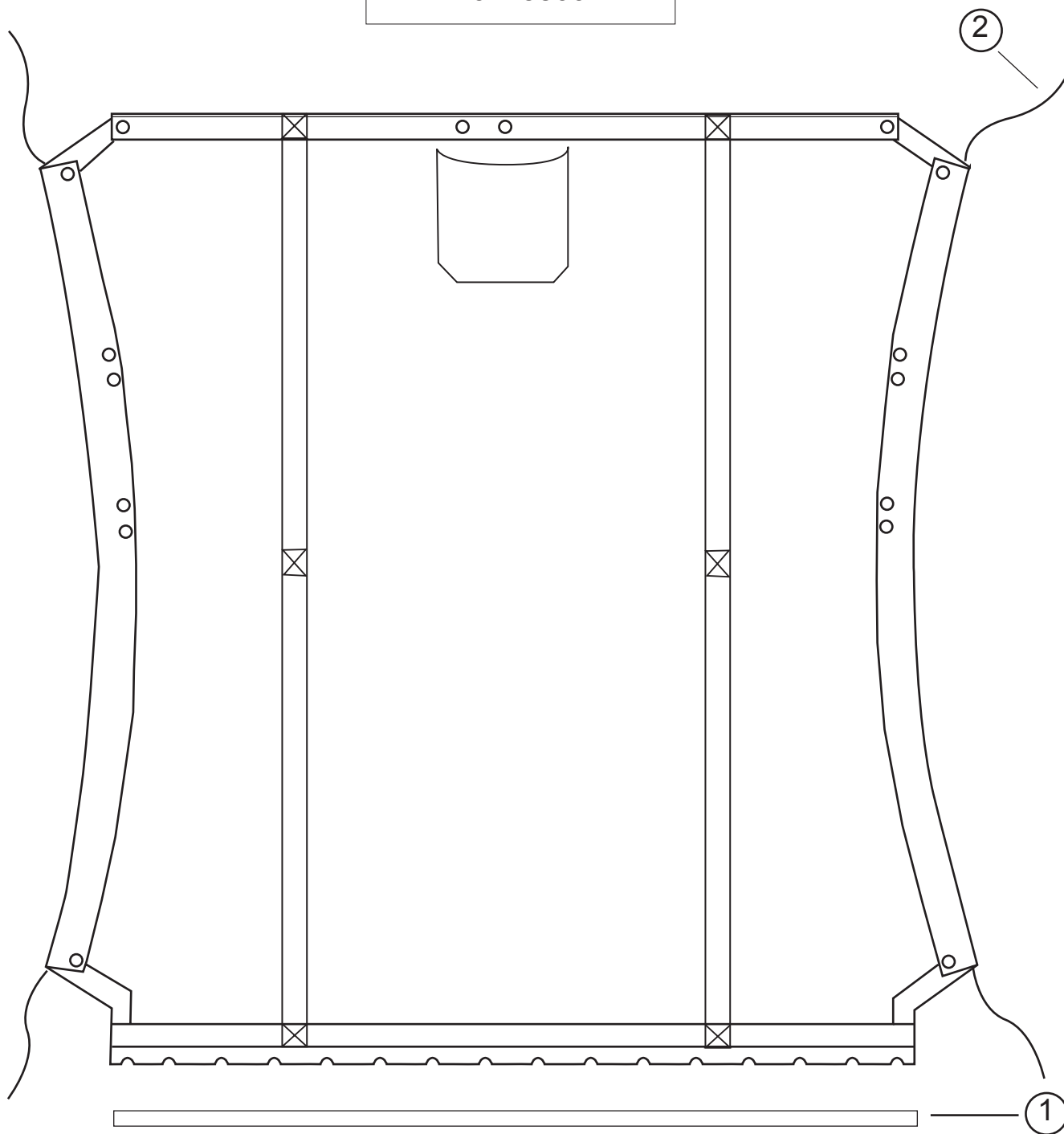
Hobie Max Club  
SPINNAKER

## RETRIEVER PATCHES SPINNAKER TRUMPET

Spi Trompette/Trumpet Spi  
16230250 Jaune/Yellow/Gelb  
16230265 Violet/Purple



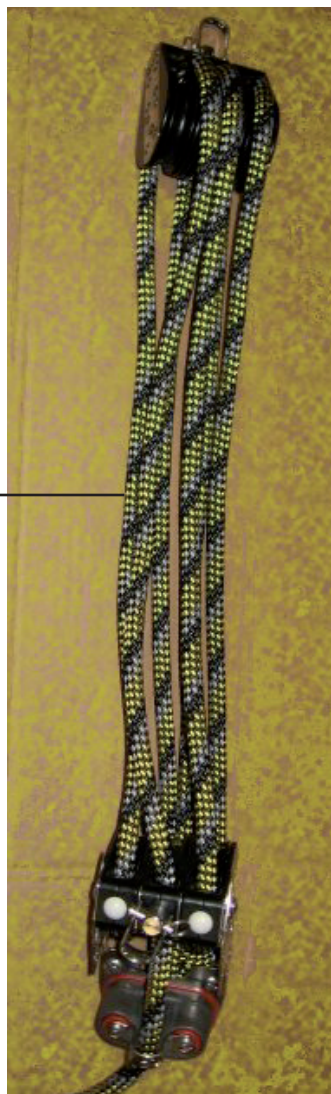
**HOBIE Max Club**  
 Trampoline/Trampoline  
 (Mesh)  
 16225800



1 - 16225000 : Jonc Trampoline Max  
 Fibreglass lacing rod  
 Fiberglasstange

2 - 18070480 : Bout de trampoline Vectran  
 Trampoline lacing Vectran  
 Trampolineleine Vectran

**Hobie Max Club**  
Palan de grand-voile/Mainsheet system  
Großschot-System



16270420 :  
Ecoute de GV  
Mainsheet  
Großschott

- |                |   |
|----------------|---|
| 1 - 99500131 : | Poulie de bôme triple<br>Boom block threefold<br>Baumblock dreifach     |
| 2 - 99500132 : | Poulie winch triple<br>Threefold ratchet block<br>Dreifacher Knarrblock |

**Hobie Max Club**  
**Kit de redressement 2003**  
**Righting kit 2003**  
**Aufrichtungssystem 2003**  
**17570250**

**OPTION**  
**OPTIONAL**

99500385 : Taquet/Cleat/Klemme  
 99500395 : Filoir taquet/Cleat/Klemme  
 99220074 PKG 10 : Vis/Screw/Schraube

99220036 PKG 10: Manille lyre 4  
 Shackle  
 Schäkkel

Traverse arrière/Rear crossbar/Achterholm

Milieu de la traverse (entre le 7ème et le 8ème bouton)  
 /Middle of the crossbar(between 7th and 8th lacing post)  
 Mitte der Achterholm (zwischen 7. und 8. Knopf)

Martingale/Dolphin striker/Unterzug

17580590 : Bride kit de redressement  
 Bridle righting kit  
 Hahnepot Aufrichtungssystem

99220057 : Pontet forgé D5  
 Pad-eye  
 Bügel

18061320 : Chape d'articulation tangon  
 Spi pole connection toggle  
 Verbindungswinkel Spibaum

770 mm

1000 mm 1000 mm

99220202  
 PKG5 : Bouchon  
 End cap  
 Endstück

60010950 : Pontet  
 Pad-eye  
 Bügel

14061245 : Axe  
 Pin  
 Achse

Traverse avant/Front crossbar/Vorderholm

17569000: Embout de bôme av.  
 Front boom end cap  
 Baumendkappe vorne  
 99220135 : Vis 8x40  
 Screw 8x40  
 Schraube 8x40  
 99061110 : Rondelle  
 PKG 10 Washer  
 Unterlegscheibe  
 99220012 : Ecrou indessérable 8 mm  
 PKG 10 Nut nylstop 8 mm  
 Selbstsichernde Mutter 8 mm

17570260 : Sachet fixation  
 Fixing kit

99216010 : Rivet 4,8 x 11  
 PKG 10 Pop rivet 4,8 x 11  
 Popniete 4,8 x 11

